

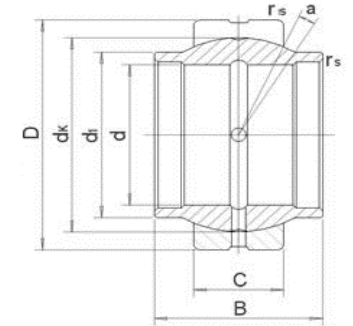
GE-LO - SERIES METRIC PLAIN SPHERICAL BEARINGS (MAINTENANCE REQUIRED)



Outer Ring and Ball: 100Cr6 Bearing Steel, Hardened and Phosphated, sliding surface treated with MoS2

Temperature Range: Open design -50°C to +150°C

GE-LO Wide Inner Ring Series (GEEW-ES)



Part Number	Dimensions									Load Ratings (KN)		Weight (kg)
	d	D	B	C	d1	dk	rs	ris	a°	Dynamic	Static	
GE12LO	12	22	12	7	15.5	18	0.3	0.3	4	10	53	0.022
GE16LO	16	28	16	9	20	23	0.3	0.3	4	17	85	0.035
GE20LO	20	35	20	12	25	29	0.3	0.3	4	30	146	0.071
GE25LO	25	42	25	16	30.5	35.5	0.6	0.6	4	48	240	0.131
GE30LO	30	47	30	18	34	40.7	0.6	0.6	4	62	310	0.168
GE32LO	32	52	32	18	37	44	0.6	1	4	65	328	0.182
GE35LO	35	55	35	20	40	47	0.6	1	4	79	399	0.253
GE40LO	40	62	40	22	46	53	0.6	1	4	99	495	0.338
GE45LO	45	68	45	25	52	60	0.6	1	4	127	637	0.481
GE50LO	50	75	50	28	57	66	0.6	1	4	156	780	0.558
GE60LO	60	90	60	36	68	80	1	1	4	256	1220	1.150
GE63LO	63	95	63	36	71.5	83	1	1	4	253	1260	1.250
GE70LO	70	105	70	40	78	92	1	1	4	313	1560	1.710
GE80LO	80	120	80	45	91	105	1	1	4	400	2000	2.390
GE90LO	90	130	90	50	99	115	1	1	4	488	2440	3.210
GE100LO	100	150	100	55	113	130	1	1	4	607	3030	4.790
GE110LO	110	160	110	55	124	140	1	1	4	654	3270	5.780
GE125LO	125	180	125	70	138	160	1	1	4	950	4750	8.490
GE160LO	160	230	160	80	177	200	1	1	4	1360	6800	16.500